

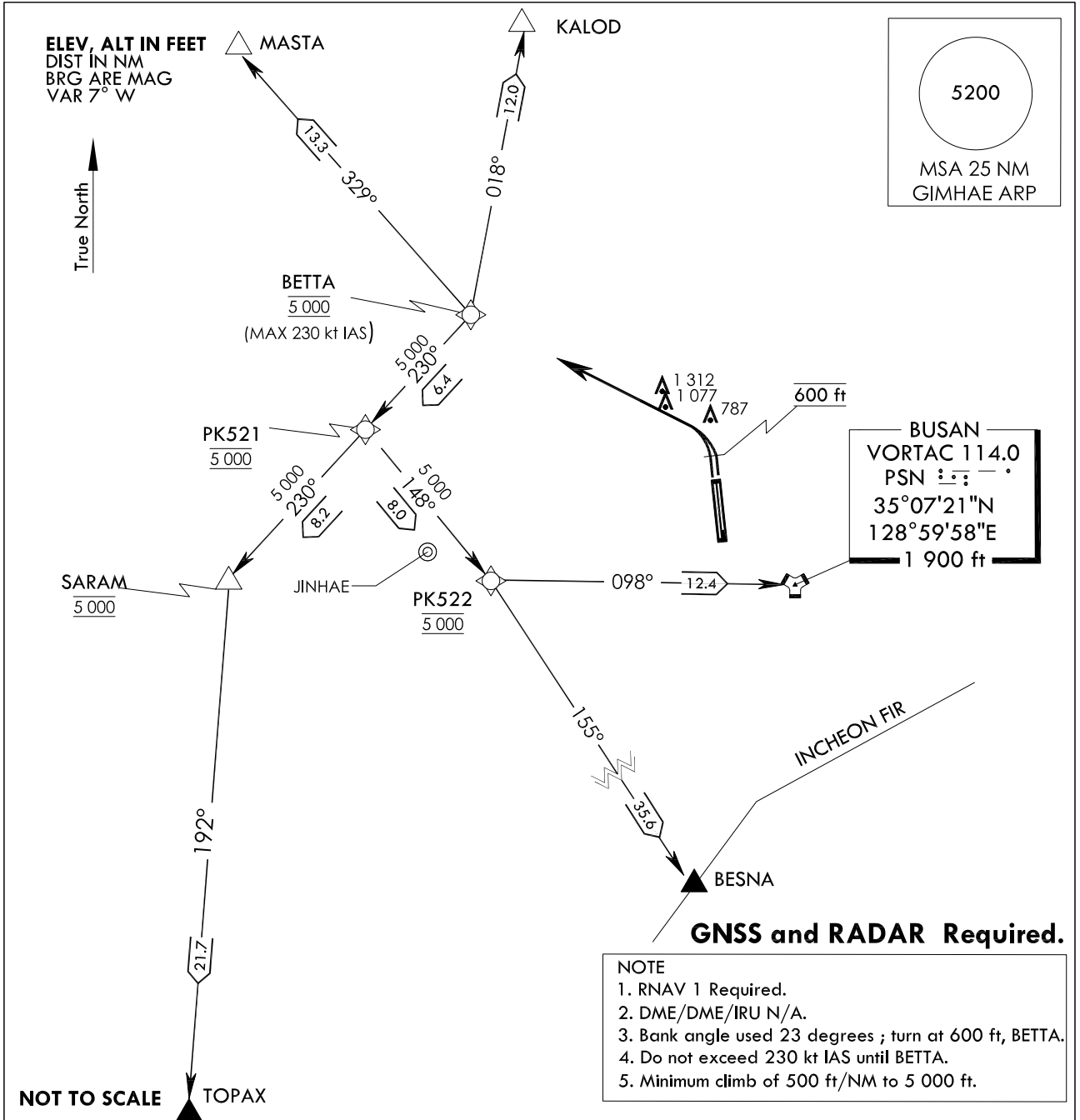
STANDARD DEPARTURE
CHART - INSTRUMENT(SID)

TRANSITION ALT 14 000
TRANSITION LVL FL 140

GIMHAE DEP 125.5
363.8
GIMHAE TWR 118.1
118.450

BUSAN/Gimhae Intl(RKPK)
RWY 36L/R
RNAV(GNSS) BETTA 2

Note : Departure under U.S. TERPS.



DEPARTURE PROCEDURE DESCRIPTION

BETTA 2 DEPARTURE

RWY 36L/R : Climb HDG 001° to 600 ft then direct to cross BETTA at 5 000 ft, thence.....
..... via (TRANSITIONS routes) and climb assigned altitude by ATC.

- KALOD transition** : From BETTA on track 018° to KALDO
- MASTA transition** : From BETTA on track 329° to MASTA
- TOPAX transition** : From BETTA on track 230° to cross PK521 at 5 000 ft, then track 192° to TOPAX.
- BESNA transition** : From BETTA on track 230° to cross PK521 at 5 000 ft, then on track 148° to cross PK522 at 5 000 ft, then on track 155° to BESNA.
- BUSAN (PSN) transition** : From BETTA on track 230° to cross PK521 at 5 000 ft, then track 148° to cross PK522 at 5 000 ft, then track 098° to BUSAN(PSN).

Change : Page control.

**BUSAN/Gimhae INTL(RKPK)
RWY 36L/R
RNAV(GNSS) BETTA 2**

AERONAUTICAL DATA TABULATION

Standard Instrument Departure Procedure Coding Tables

Departure Route - RWY 36R

Serial Number	Path Descriptor	Waypoint Identifier	Fly-over	Course/Track °M(°T)	Distance (NM)	Turn direction	Altitude (ft)	Speed (kt)	Coordinates	VPA/TCH	Navigation specification	Remarks
001	-	RWY 18L	-	-	-	-	-	-	35°11'38.60"N 128°56'14.73"E	-	RNAV 1	DER
002	VA	-	-	001.42(353.95)	-	-	@600	-230	-	-	RNAV 1	CG 500 ft/NM to 5 000 ft
003	DF	BETTA	-	-	-	-	@5 000	-230	35°18'24.2"N 128°43'46.2"E	-	RNAV 1	-

Departure Route - RWY 36L

Serial Number	Path Descriptor	Waypoint Identifier	Fly-over	Course/Track °M(°T)	Distance (NM)	Turn direction	Altitude (ft)	Speed (kt)	Coordinates	VPA/TCH	Navigation specification	Remarks
001	-	RWY 18R	-	-	-	-	-	-	35°11'37.94"N 128°56'06.46"E	-	RNAV 1	DER
002	VA	-	-	001.42(353.95)	-	-	@600	-230	-	-	RNAV 1	CG 500 ft/NM to 5 000 ft
003	DF	BETTA	-	-	-	-	@5 000	-230	35°18'24.2"N 128°43'46.2"E	-	RNAV 1	-

RNAV BETTA 2 - BUSAN(PSN VORTAC) Transition

Serial Number	Path Descriptor	Waypoint Identifier	Fly-over	Course/Track °M(°T)	Distance (NM)	Turn direction	Altitude (ft)	Speed (kt)	Coordinates	VPA/TCH	Navigation specification	Remarks
001	TF	PK521	-	229.87(222.40)	6.36	-	@5 000	-	35°13'42.0"N 128°38'32.2"E	-	RNAV 1	-
002	TF	PK522	-	147.69(140.22)	8.04	-	@5 000	-	35°07'30.3"N 128°44'48.6"E	-	RNAV 1	-
003	TF	BUSAN	-	098.07(090.60)	12.44	-	+5 000	-	35°07'21.5"N 128°59'58.5"E	-	RNAV 1	PSN VORTAC

RNAV BETTA 2 - BESNA Transition

Serial Number	Path Descriptor	Waypoint Identifier	Fly-over	Course/Track °M(°T)	Distance (NM)	Turn direction	Altitude (ft)	Speed (kt)	Coordinates	VPA/TCH	Navigation specification	Remarks
001	TF	PK521	-	229.87(222.40)	6.36	-	@5 000	-	35°13'42.0"N 128°38'32.2"E	-	RNAV 1	-
002	TF	PK522	-	147.69(140.22)	8.04	-	@5 000	-	35°07'30.3"N 128°44'48.6"E	-	RNAV 1	-
003	TF	BESNA	-	155.20(147.73)	35.62	-	+5 000	-	34°37'18.0"N 129°07'51.0"E	-	RNAV 1	-

RNAV BETTA 2 - TOPAX Transition

Serial Number	Path Descriptor	Waypoint Identifier	Fly-over	Course/Track °M(°T)	Distance (NM)	Turn direction	Altitude (ft)	Speed (kt)	Coordinates	VPA/TCH	Navigation specification	Remarks
001	TF	PK521	-	229.87(222.40)	6.36	-	@5 000	-	35°13'42.0"N 128°38'32.2"E	-	RNAV 1	-
002	TF	SARAM	-	229.82(222.35)	8.23	-	@5 000	-	35°07'36.3"N 128°31'46.7"E	-	RNAV 1	-
003	TF	TOPAX	-	191.64(184.17)	21.71	-	+5 000	-	34°45'55.3"N 128°29'51.7"E	-	RNAV 1	-

RNAV BETTA 2 - MASTA Transition

Serial Number	Path Descriptor	Waypoint Identifier	Fly-over	Course/Track °M(°T)	Distance (NM)	Turn direction	Altitude (ft)	Speed (kt)	Coordinates	VPA/TCH	Navigation specification	Remarks
001	TF	MASTA	-	328.96(321.49)	13.25	-	+5 000	-	35°28'47.0"N 128°33'40.0"E	-	RNAV 1	-

RNAV BETTA 2 - KALOD Transition

Serial Number	Path Descriptor	Waypoint Identifier	Fly-over	Course/Track °M(°T)	Distance (NM)	Turn direction	Altitude (ft)	Speed (kt)	Coordinates	VPA/TCH	Navigation specification	Remarks
001	TF	KALOD	-	017.96(010.49)	11.98	-	+5 000	-	35°30'12.1"N 128°46'26.5"E	-	RNAV 1	-

Change : Page control.

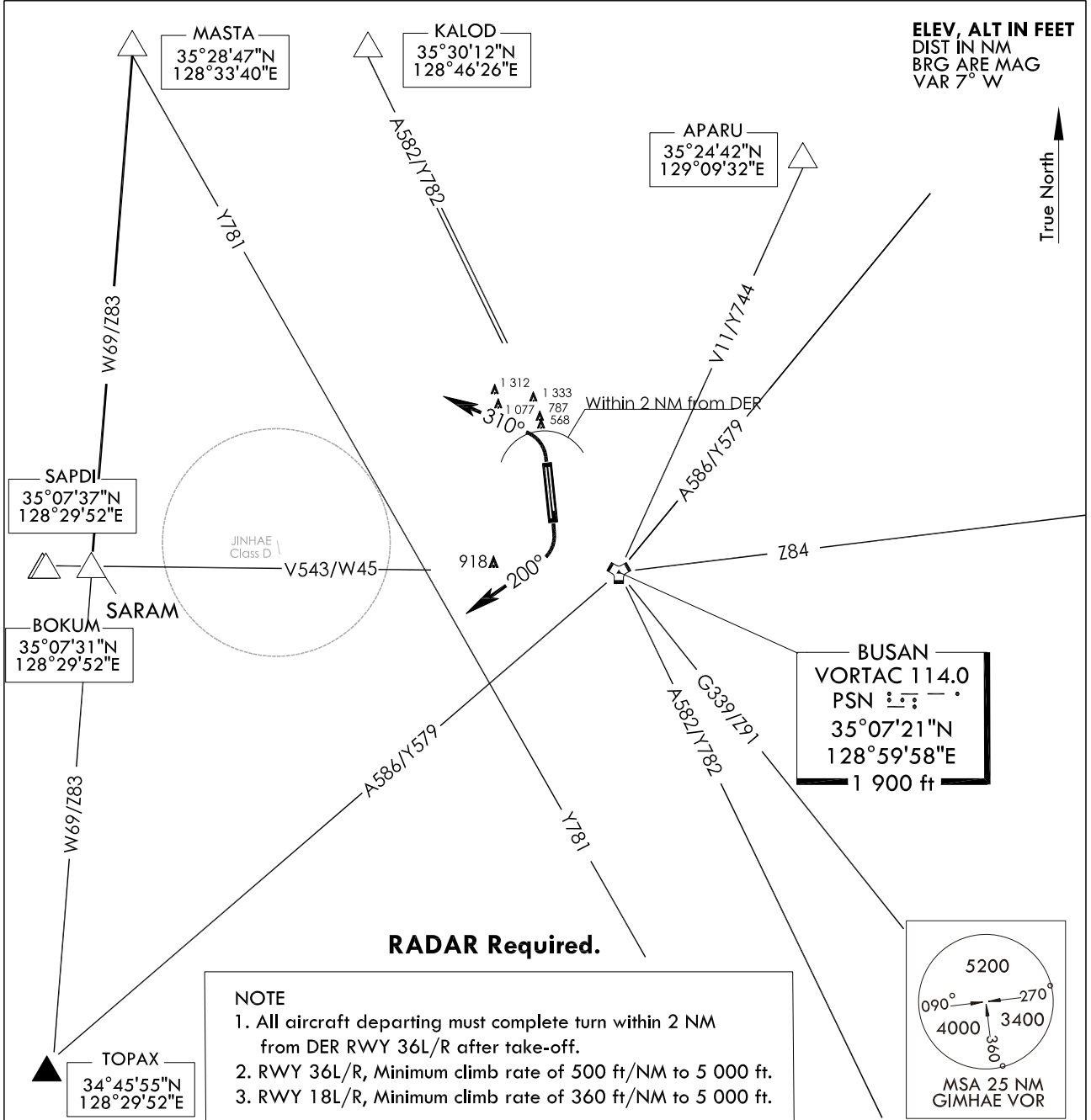
**STANDARD DEPARTURE
CHART - INSTRUMENT(SID)**

TRANSITION ALT 14 000
TRANSITION LVL FL 140

GIMHAE DEP 125.5
363.8
GIMHAE TWR 118.1
118.450

BUSAN/Gimhae Intl(RKPK)
RWY 36L/R
RWY 18L/R
GIMHAE 2

Note : Departure under U.S. TERPS.



NOTE

1. All aircraft departing must complete turn within 2 NM from DER RWY 36L/R after take-off.
2. RWY 36L/R, Minimum climb rate of 500 ft/NM to 5 000 ft.
3. RWY 18L/R, Minimum climb rate of 360 ft/NM to 5 000 ft.

DEPARTURE ROUTE DESCRIPTION

GIMHAE 2 DEPARTURE

RWY 36L/R : Climb left turn HDG 310°, Thence.....
RWY 18L/R : Climb right turn HDG 200°, Thence.....

.....Expect radar vectors to intercept filed Enroute fix or Navaid.
Maintain 5 000 ft or assigned altitude (flight level).
Expect filed altitude/flight level 10 minutes after departure.

LOST COMMUNICATIONS :

If radio contact is not established with departure control prior to reaching 5 000 ft, Continue climb to 8 000 ft before turning to filed fix/Navaid and proceed filed route and altitude.

INTENTIONALLY

LEFT

BLANK

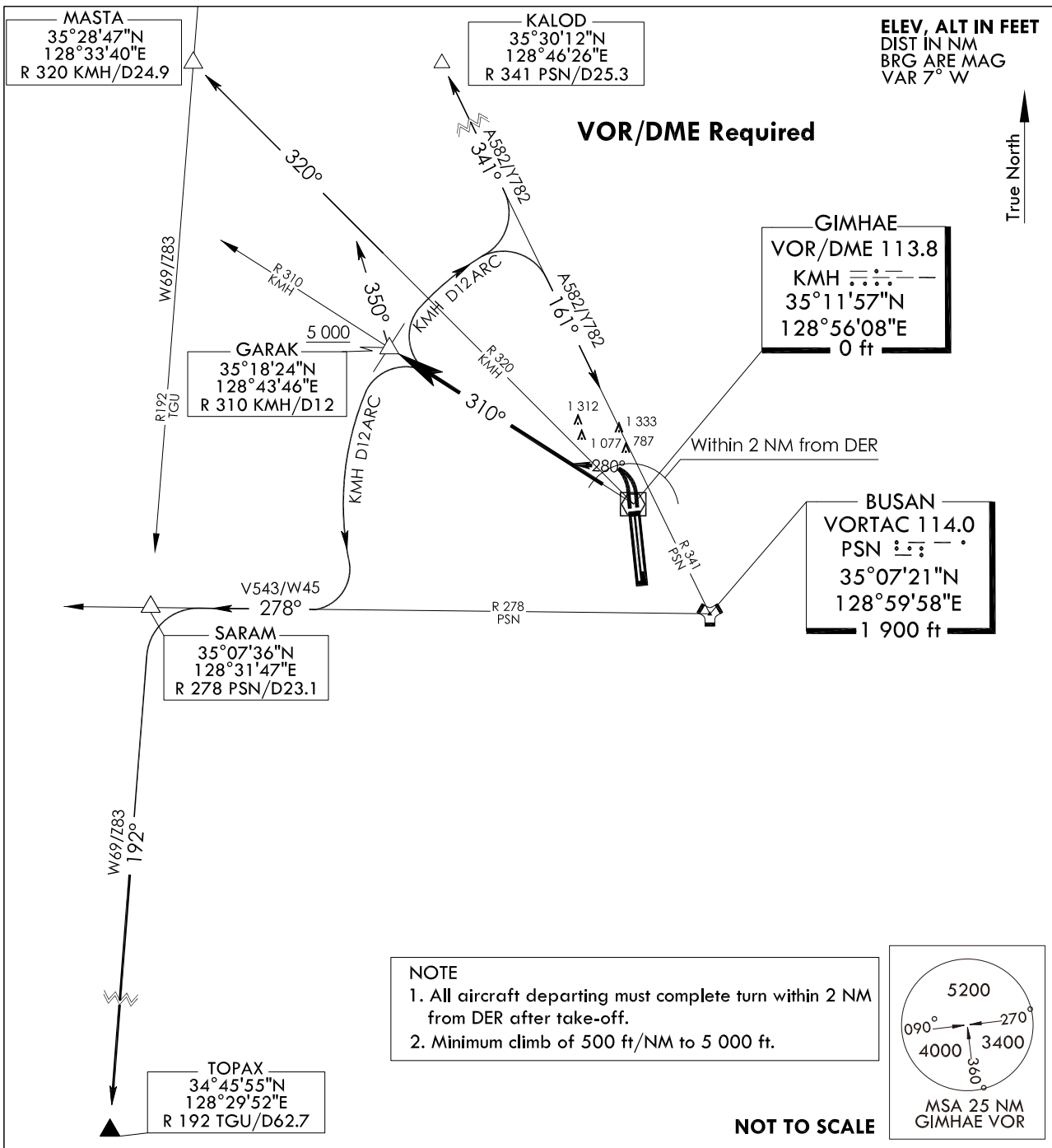
**STANDARD DEPARTURE
CHART - INSTRUMENT(SID)**

TRANSITION ALT 14 000
TRANSITION LVL FL 140

GIMHAE DEP	125.5
GIMHAE TWR	118.1
	118.450

BUSAN/Gimhae Intl(RKPK)
RWY 36L/R
GARAK 3

Note : Departure under U.S. TERPS.



DEPARTURE ROUTE DESCRIPTION

GARAK 3 DEPARTURE

RUNWAY 36L/R : Climbing left turn HDG 280° to intercept R 310 KMH and R 310 KMH to cross GARAK at or above 5 000 ft. thence.....
.....via (TRANSITIONS), climb assigned altitude or as directed by ATC.

KALOD Transition : Right turn and proceed via KMH 12 DME arc to R 341 PSN, then via R 341 PSN to KALOD.

BUSAN(PSN) Transition : Right turn and proceed via KMH 12 DME arc to R 341 PSN, then via R 341 PSN to PSN.

MASTA Transition : Right turn HDG 350° to R 320 KMH , then via R 320 KMH to MASTA.

TOPAX Transition : Left turn and proceed via KMH 12 DME arc to R 278 PSN, then via R 278 PSN to SARAM, then left turn via R 192 TGU to TOPAX.

Change : Page control.

INTENTIONALLY

LEFT

BLANK

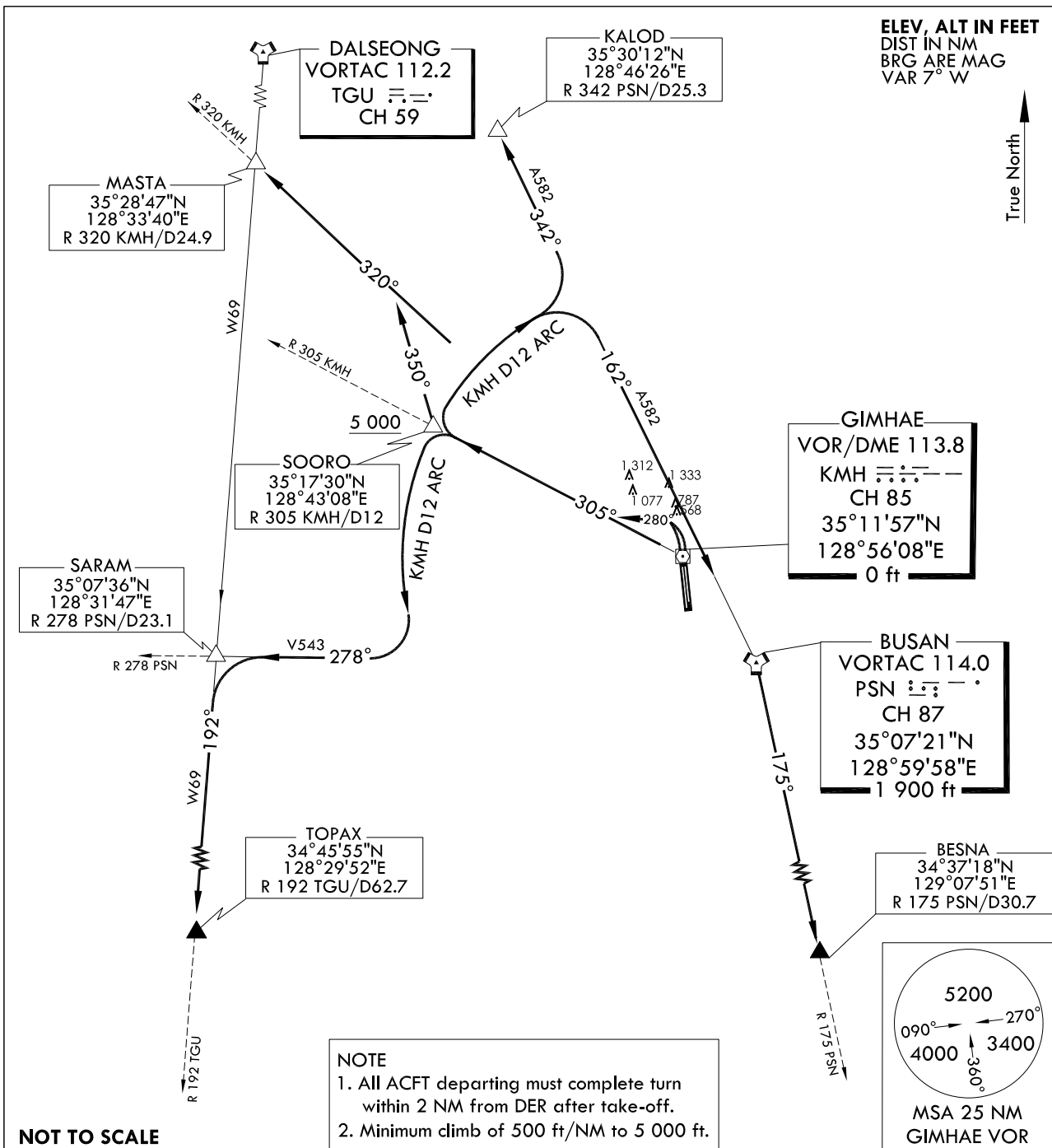
**STANDARD DEPARTURE
CHART - INSTRUMENT(SID)**

TRANSITION ALT 14 000
TRANSITION LVL FL 140

GIMHAE DEP 125.5
363.8
GIMHAE TWR 118.1
118.450

BUSAN/Gimhae Intl(RKPK)
RWY 36L/R
SOORO 1

Note : Departure under U.S. TERPS.



DEPARTURE ROUTE DESCRIPTION

SOORO 1 DEPARTURE

RUNWAY 36L/R : Climbing left turn as soon as practicable HDG 280° to intercept R 305 KMH and R 305 KMH to cross SOORO at or above 5 000 ft. thence.....
.....via (TRANSITIONS), climb assigned altitude or as directed by ATC.

KALOD Transition : Right turn and proceed via KMH 12 DME arc to R 342 PSN, then via R 342 PSN to KALOD.

BUSAN(PSN) Transition : Right turn and proceed via KMH 12 DME arc to R 342 PSN, then via R 342 PSN to PSN.

MASTA Transition : Right turn HDG 350° to R 320 KMH , then R 320 KMH to MASTA.

TOPAX Transition : Left turn and proceed via KMH 12 DME arc to R 278 PSN, then via R 278 PSN to SARAM, then left turn via R 192 TGU to TOPAX.

BESNA Transition : Right turn and proceed via KMH 12 DME arc to R 342 PSN, then via R 342 PSN to PSN, then via R 175 PSN to BESNA.

INTENTIONALLY

LEFT

BLANK

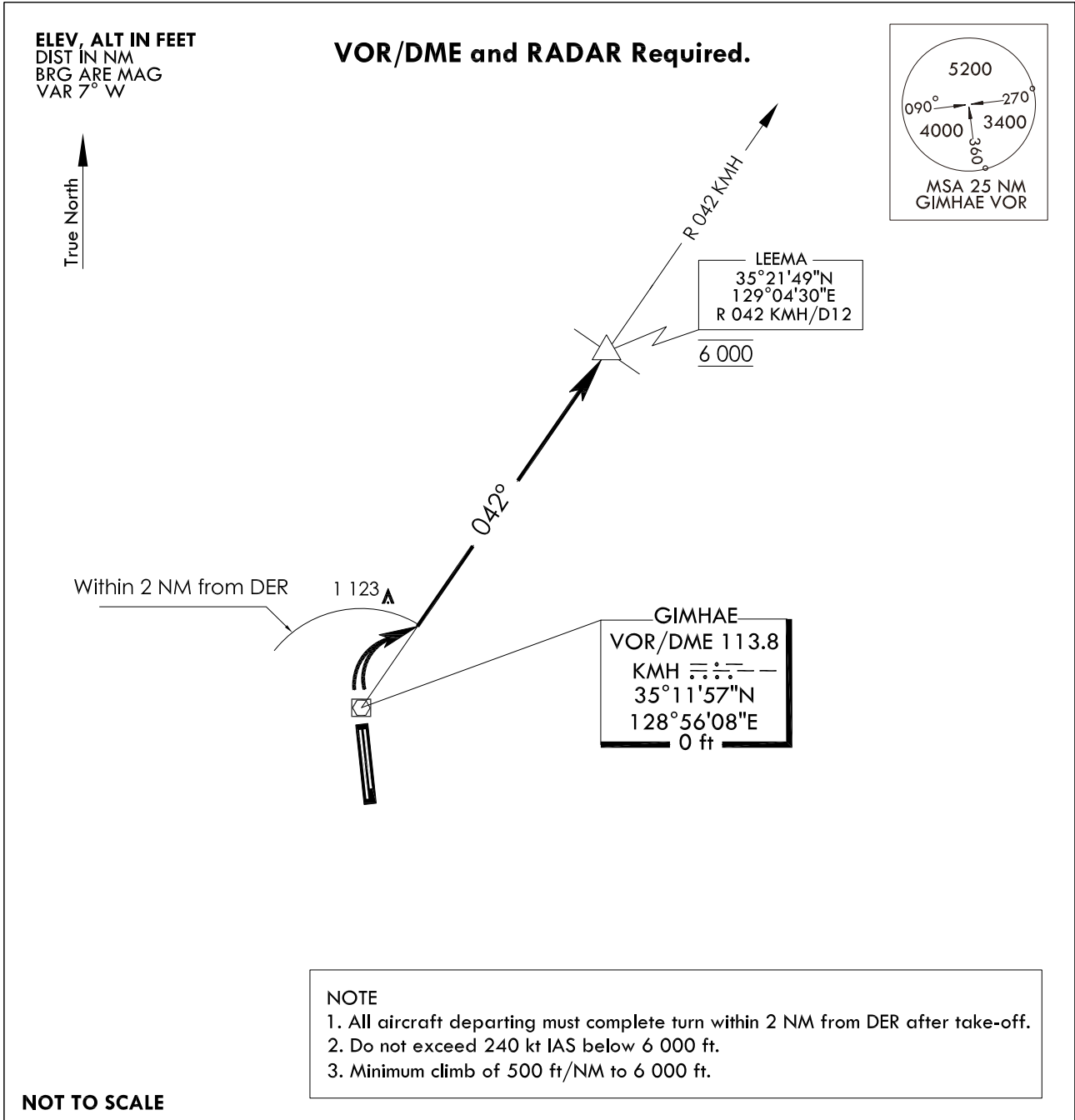
**STANDARD DEPARTURE
CHART - INSTRUMENT(SID)**

TRANSITION ALT 14 000
TRANSITION LVL FL 140

GIMHAE DEP 125.5
363.8
GIMHAE TWR 118.1
118.450

**BUSAN/Gimhae Intl(RKPK)
RWY 36L/R
LEEMA 2**

Note : Departure under U.S. TERPS.



DEPARTURE PROCEDURE DESCRIPTION

LEEMA 2 DEPARTURE

RUNWAY 36L/R : Climbing right turn to intercept R 042 KMH
and climb to 6 000 ft on R 042 KMH to LEEMA,
then expect RADAR vector to assigned route and fix.

INTENTIONALLY

LEFT

BLANK

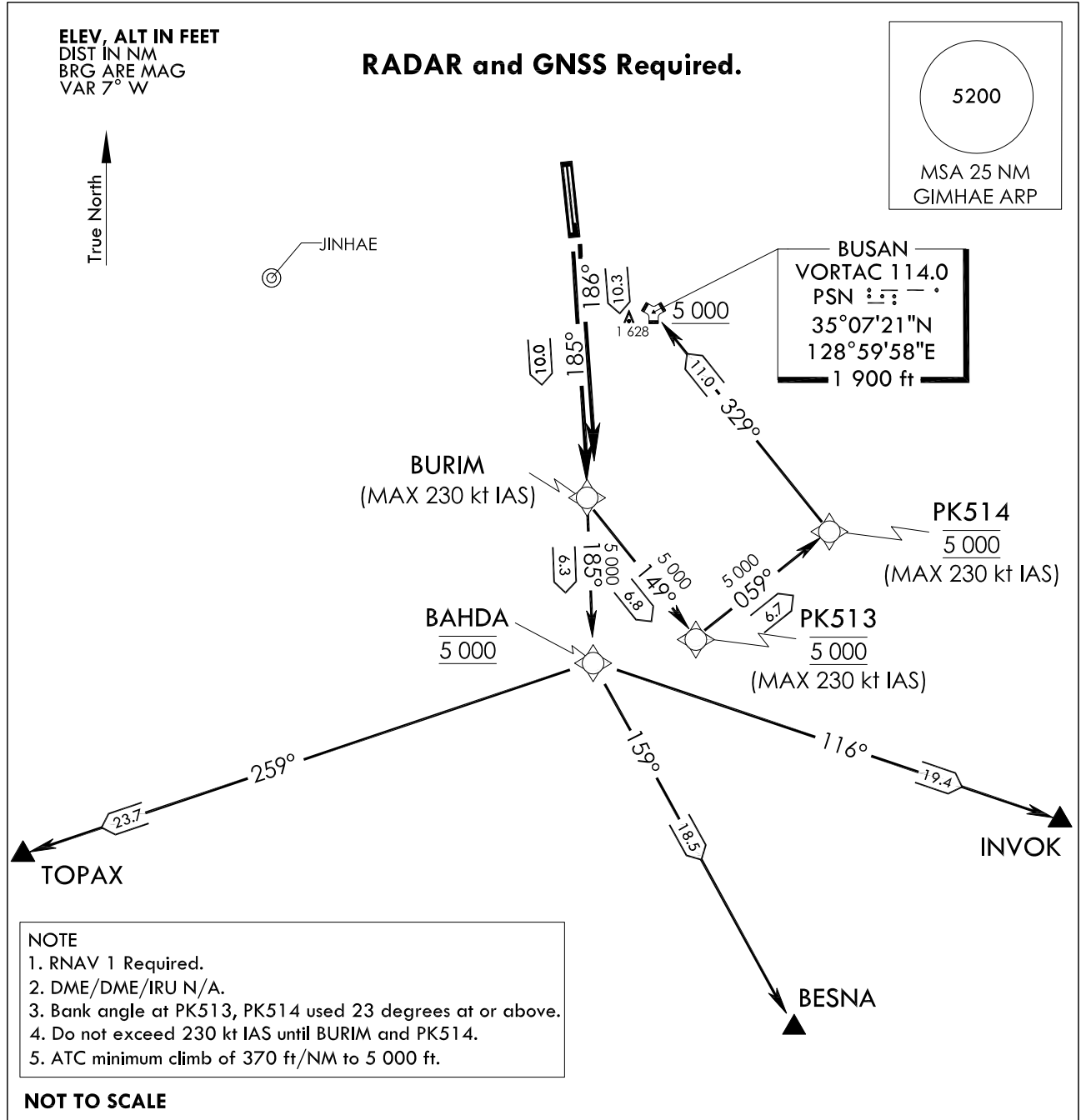
**STANDARD DEPARTURE
CHART - INSTRUMENT(SID)**

TRANSITION ALT 14 000
TRANSITION LVL FL 140

GIMHAE DEP 125.5
363.8
GIMHAE TWR 118.1
118.450

**BUSAN/Gimhae Intl(RKPK)
RWY 18L/R
RNAV(GNSS) BURIM 2**

Note : Departure under U.S. TERPS.



DEPARTURE ROUTE DESCRIPTION

BURIM 2 DEPARTURE

RUNWAY 18R : Climb on course 185° to BURIM, thence.....

RUNWAY 18L : Climb on course 186° to BURIM, thence.....

..... via (TRANSITIONS routes) and climb assigned altitude by ATC.

TOPAX transition : From BURIM on track 185° to cross BAHDA at 5 000 ft, then track 259° to TOPAX.

BESNA transition : From BURIM on track 185° to cross BAHDA at 5 000 ft, then track 159° to BESNA.

INVOK transition : From BURIM on track 185° to cross BAHDA at 5 000 ft, then track 116° to INVOK.

BUSAN (PSN) transition : From BURIM on track 149° to cross PK513 at 5 000 ft,
then track 059° to cross PK514 at 5 000 ft,
then track 329° to cross BUSAN(PSN) at or above 5 000 ft.

Change : Page control.

BUSAN/Gimhae INTL(RKPK)
RWY 18L/R
RNAV(GNSS) BURIM 2

AERONAUTICAL DATA TABULATION

Standard Instrument Departure Procedure Coding Tables

Departure Route - RWY 18L

Serial Number	Path Descriptor	Waypoint Identifier	Fly-over	Course/Track °M(°T)	Distance (NM)	Turn direction	Altitude (ft)	Speed (kt)	Coordinates	VPA/TCH	Navigation specification	Remarks
001	-	RWY 36R	-	-	-	-	-	-	35°10'10.10"N 128°56'26.14"E	-	RNAV 1	DER
002	CF	BURIM	-	185.79(178.33)	10.29	-	-	-230	34°59'52.3"N 128°56'48.1"E	-	RNAV 1	CG 370 ft/NM to 5 000 ft

Departure Route - RWY 18R

Serial Number	Path Descriptor	Waypoint Identifier	Fly-over	Course/Track °M(°T)	Distance (NM)	Turn direction	Altitude (ft)	Speed (kt)	Coordinates	VPA/TCH	Navigation specification	Remarks
001	-	RWY 36L	-	-	-	-	-	-	35°09'54.69"N 128°56'19.79"E	-	RNAV 1	DER
002	CF	BURIM	-	185.25(177.79)	10.03	-	-	-230	34°59'52.3"N 128°56'48.1"E	-	RNAV 1	CG 370 ft/NM to 5 000 ft

RNAV BURIM 2 - TOPAX Transition

Serial Number	Path Descriptor	Waypoint Identifier	Fly-over	Course/Track °M(°T)	Distance (NM)	Turn direction	Altitude (ft)	Speed (kt)	Coordinates	VPA/TCH	Navigation specification	Remarks
001	TF	BAHDA	-	185.24(177.77)	6.27	-	@5 000	-	34°53'34.4"N 128°57'05.8"E	-	RNAV 1	CG 370 ft/NM to 5 000 ft
002	TF	TOPAX	-	258.78(251.31)	23.69	-	+5 000	-	34°45'55.3"N 128°29'51.7"E	-	RNAV 1	-

RNAV BURIM 2 - BESNA Transition

Serial Number	Path Descriptor	Waypoint Identifier	Fly-over	Course/Track °M(°T)	Distance (NM)	Turn direction	Altitude (ft)	Speed (kt)	Coordinates	VPA/TCH	Navigation specification	Remarks
001	TF	BAHDA	-	185.24(177.77)	6.27	-	@5 000	-	34°53'34.4"N 128°57'05.8"E	-	RNAV 1	CG 370 ft/NM to 5 000 ft
002	TF	BESNA	-	158.81(151.34)	18.51	-	+5 000	-	34°37'18.0"N 129°07'51.0"E	-	RNAV 1	-

RNAV BURIM 2 - INVOK Transition

Serial Number	Path Descriptor	Waypoint Identifier	Fly-over	Course/Track °M(°T)	Distance (NM)	Turn direction	Altitude (ft)	Speed (kt)	Coordinates	VPA/TCH	Navigation specification	Remarks
001	TF	BAHDA	-	185.24(177.77)	6.27	-	@5 000	-	34°53'34.4"N 128°57'05.8"E	-	RNAV 1	CG 370 ft/NM to 5 000 ft
002	TF	INVOK	-	116.21(108.75)	19.38	-	+5 000	-	34°47'19.0"N 129°19'23.0"E	-	RNAV 1	-

RNAV BURIM 2 - PSN(VORTAC) Transition

Serial Number	Path Descriptor	Waypoint Identifier	Fly-over	Course/Track °M(°T)	Distance (NM)	Turn direction	Altitude (ft)	Speed (kt)	Coordinates	VPA/TCH	Navigation specification	Remarks
001	TF	PK513	-	148.71(141.24)	6.83	-	@5 000	-230	34°54'32.3"N 129°01'59.8"E	-	RNAV 1	CG 370 ft/NM to 5 000 ft
002	TF	PK514	-	058.76(051.29)	6.71	-	@5 000	-230	34°58'44.3"N 129°08'22.2"E	-	RNAV 1	-
003	TF	PSN	-	328.82(321.35)	11.03	-	+5 000	-	35°07'21.5"N 128°59'58.5"E	-	RNAV 1	VORTAC

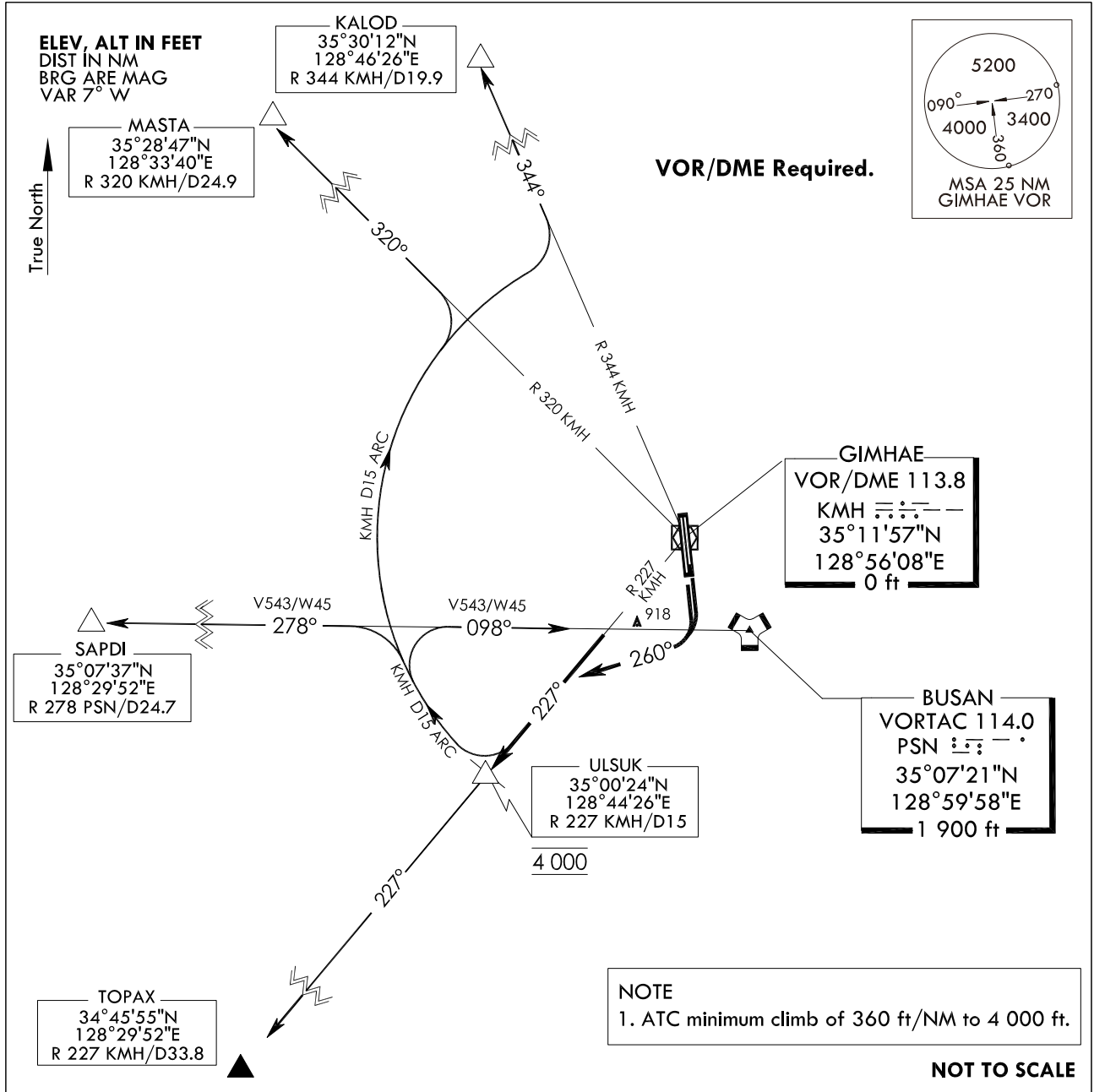
**STANDARD DEPARTURE
CHART - INSTRUMENT(SID)**

TRANSITION ALT 14 000
TRANSITION LVL FL 140

GIMHAE DEP 125.5
363.8
GIMHAE TWR 118.1
118.450

BUSAN/Gimhae Intl(RKPK)
RWY 18L/R
ULSUK 3

Note : Departure under U.S. TERPS.



DEPARTURE PROCEDURE DESCRIPTION

ULSUK 3 DEPARTURE

RUNWAY 18L/R : Climbing right turn HDG 260° to intercept R 227 KM and climbing 4 000 ft on R 227 KM to ULSUK, thence.....
.....via (TRANSITION), climb assigned altitude or as directed by ATC.

KALOD transition : Right turn and proceed via KM 15DME arc to R 344 KM, then via R 344 KM to KALOD.

MASTA transition : Right turn and proceed via KM 15DME arc to R 320 KM, then via R 320 KM to MASTA.

SAPDI transition : Right turn and proceed via KM 15DME arc to R 278 PSN, then via R 278 PSN to SAPDI.

BUSAN (PSN) transition : Right turn and proceed via KM 15DME arc to R 278 PSN, then via R 278 PSN to BUSAN (PSN).

TOPAX transition : R 227 KM to TOPAX.

Change : Page control.

INTENTIONALLY

LEFT

BLANK

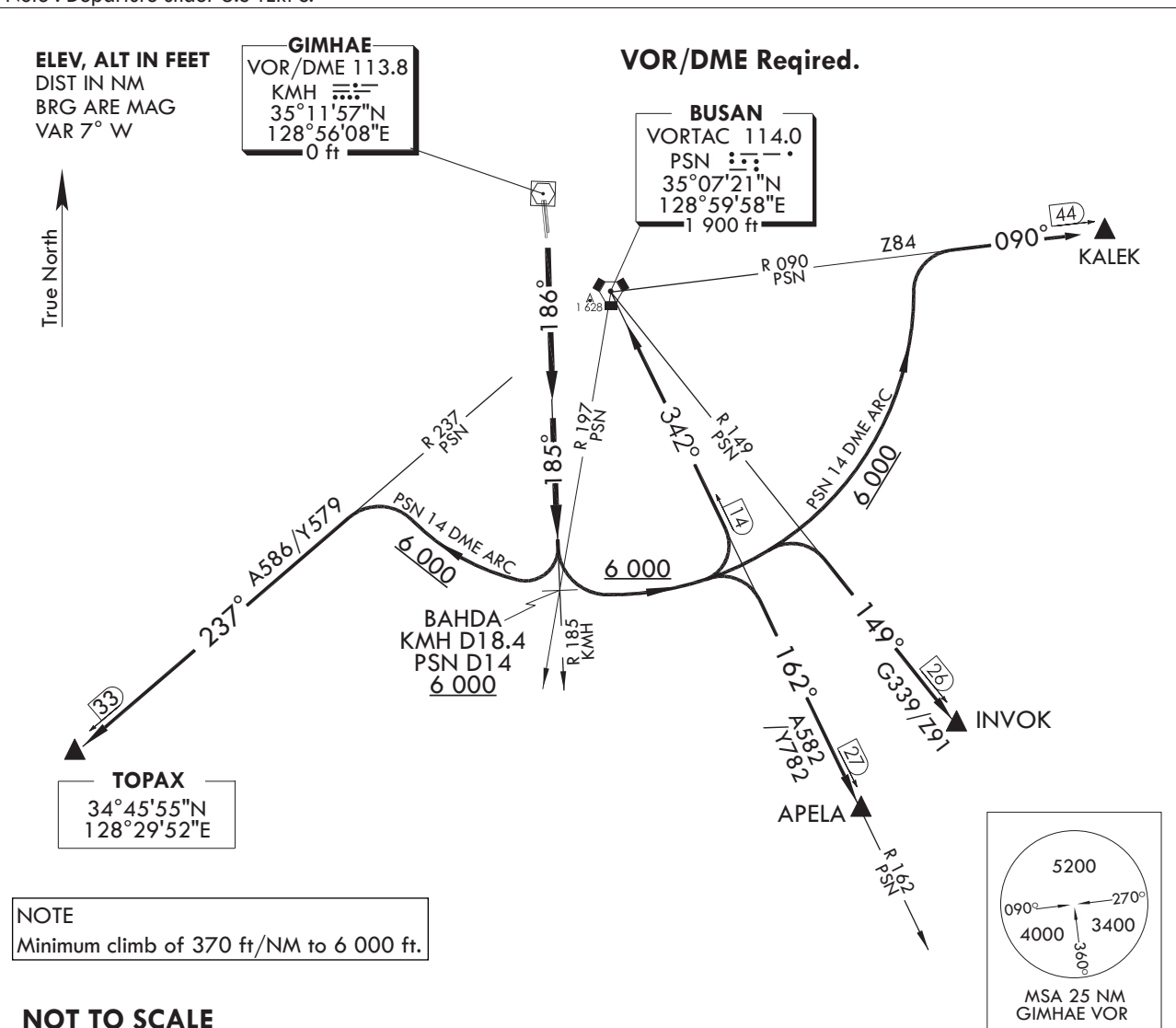
STANDARD DEPARTURE CHART
INSTRUMENT (SID)

TRANSITION ALT 14 000
TRANSITION LVL FL 140

GIMHAE DEP 125.5 363.8
GIMHAE TWR 118.1 233.3
118.450 236.6

BUSAN/Gimhae INTL(RKPK)
RWY 18L/R
BAHDA 1

Note : Departure under U.S TERPS.



DEPARTURE ROUTE DESCRIPTION

BAHDA 1 DEPARTURE

RUNWAY 18L/R : Climb 6 000 ft via HDG 186° to intercept R 185 KMH to cross BAHDA at or above 6 000 ft, then via(TRANSITION routes) and climb assigned altitude by ATC.

KALEK transition : Left turn and proceed via the PSN D14 ARC to intercept R 090 PSN then R 090 PSN to KALEK.

INVOK transition : Left turn and proceed via the PSN D14 ARC to intercept R 149 PSN then R 149 PSN to INVOK.

APELA transition : Left turn and proceed via the PSN D14 ARC to intercept R 162 PSN then R 162 PSN to APELA.

BUSAN(VORTAC) transition : Left turn and proceed via the PSN D14 ARC to intercept R 162 PSN then R 162 PSN to BUSAN VORTAC(PSN).

TOPAX transition : Right turn and proceed via the PSN D14 ARC to intercept R 237 PSN then R 237 PSN to TOPAX.

Change : Page control.

INTENTIONALLY

LEFT

BLANK